

▶ PAGED HEXA

▪ Scope

Exterior cross build hardwood plywood covered with phenol film pressed in high temperature with "honey comb" structure. Imprint of hexa made in pressing process display decorative aspects of made surface.

Properties of used film made such plywood: resistant to mechanical damages, abrasion and higher resistant to most popular chemicals as solvents and acids.

▪ Field of application

- ▶ floors and semitrailer elements,
- ▶ temporary marquee event flooring (available B₁₅1),
- ▶ containers, commercial floors,
- ▶ scaffoldings.

▪ Structure

Under film is cross built hardwood plywood.

▪ Materials

▶ Phenol film

Test „taber abramer“:

Overlay type	Test value
80/220 g/m ²	600

Test „rolling test“:

Test value (according to SS 923508)
2000 ± 35%

- ▶ **100% hardwood plywood exterior** (throughout hardwood plywood).

- ▶ **Acrylic water resistatn paint** for painting of the edges - on request.

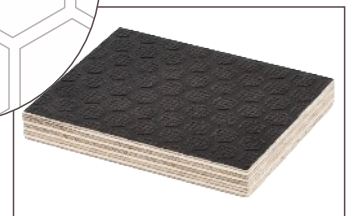
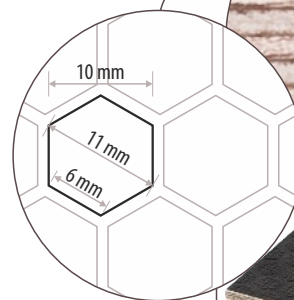
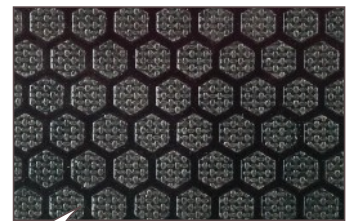
▪ Types of the surface structure

Hexa imprint (PH / smooth), (PH / Net).

▪ Types of the surface structure

Categories of characteristic	Range to tolerance
Mat spots	permitted up to 20 cm ² up to a number 2 pcs. / 1 m ²
Scratch e.g. because of pressing plate	permitted of occasional
Crack of film	not permitted
Defects at the edges of the panel due to cracks of film and painting	permitted up to 2mm from the edges
Streaks, fogging color on film surface	minor permitted

Attention! Colour of film can be changed because of sunbeams.



Paged

Sklejka

Characteristic

Parameters	Norm	Unit	Value											
Panel thickness		mm	6,5	9	12	15	18	21	24	27	30	35	40	
Gluing	EN 314		Class 3											
Numbers of plies			5	7	9	11	13	15	17	19	21	25	27	
Wood species			Birch											
Density		kg/m ³	640 - 760											
Standard sizes		mm	1250 x 2500 / 3000						1500 x 2500 / 3000					
Bending class														
cross grain	EN 310	F class	25	35	35	35	35	30	30	30	30	30	30	
long grain	EN 310	EN 636	50	40	40	40	40	40	35	35	35	35	35	
Elasticity bending class														
cross grain	EN 310	F class	30	40	50	60	60	60	60	60	60	60	60	
long grain	EN 310	EN 636	90	90	80	80	80	80	80	80	80	70	70	
Streight bending														
cross grain	EN 310	N/mm ²	39,2	52,4	54,8	53,2	52,0	45,5	45,4	45,5	45,6	46,1	45,8	
long grain	EN 310		76,0	68,1	63,5	62,8	61,7	56,8	56,1	55,5	54,9	53,8	53,5	
Elasticity bending														
cross grain	EN 310	N/mm ²	3059	4302	4926	6059	5684	5517	5460	5461	5495	5604	5520	
long grain	EN 310		9680	8640	8048	7913	7854	7706	7595	7509	7268	7190	7150	
Air sound solution	EN 13986+A1	dB	250 - 500 Hz - 0,10						1000 - 2000 Hz - 0,30					
Thermal conductivity	EN 13986+A1	W/m·K	0,17											
Antislip	Din 51130		R10											
Relase of formaldehyde	EN 717-2, EN 13986+A1		Class E1											
Approval Granted			E20 118RII -02											
Reaction to fire	EN 13986+A1		Class D-s2, d0											
Water vapour permeability	EN 13986+A1								Wet cup - 90 Dry cup - 220					
Biological durability	EN 13986+A1		Class 3											
Content of pentachlorophenol (PCP)	EN 13986+A1		Not contain											

Other

Other conditions can be agreed between the parties.